

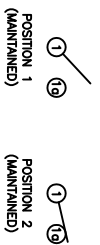
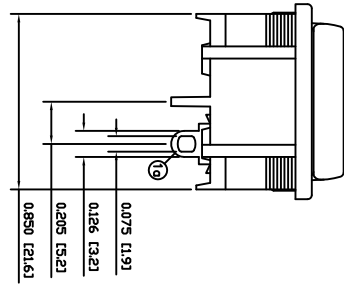
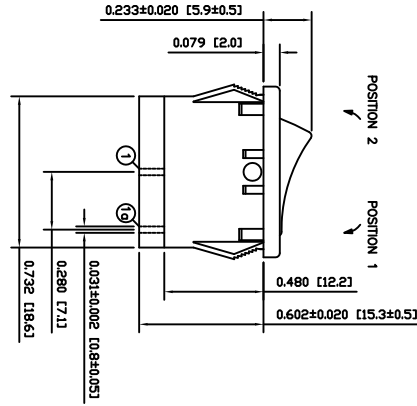
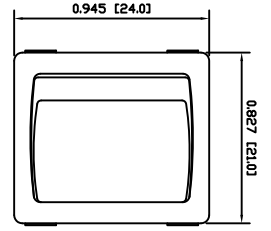
SHEETS

SPECIFICATIONS

APPROVALS

REVISION

1	2	3	4	5	6	7	8
---	---	---	---	---	---	---	---



**FUNCTION:**  
1P1T OFF-ON

**RATINGS:**  
ANSI/UL 1054 and CAN/CSA C22.2 No. 55 (E194579):  
10A 125VAC [UR, CLR]  
EN 61058-1:2002:  
6A 250V~ μ 1E4 T85 [ENEC14, SEMKO]

**CONTACT RESISTANCE:**  
Initial: 5mΩ Max. at 50VAC  
Insulation Resistance:  
100kΩ Min. at 500VDC

**DIELECTRIC STRENGTH:**  
1,500VAC for 1 Minute

**ELECTRICAL LIFE:**  
6,000 Cycles [UR, CLR]  
10,000 Cycles [ENEC14, SEMKO]

**TEMPERATURE:**  
Operating: -20°C to 105°C [UR, CLR]  
Operating: -20°C to 85°C [ENEC14, SEMKO]

**APPROVALS:**

**COLORS AND MARKINGS**

**BODY:**  
Black

**ACTUATOR:**  
Black

**MARKINGS:**  
None

**MARKING COLOR:**  
None

**MATERIALS**

**BODY:**  
Polyamide 6/6 (PA66), UL94 V-2

**ACTUATOR:**  
Polyamide 6/6 (PA66), UL94 V-2

**SPRING:**  
Steel

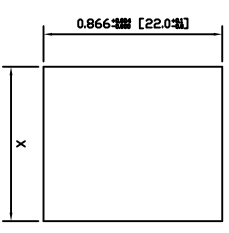
**BALL:**  
Steel

**MOBILE CONTACT:**  
Silver Alloy

**CONTACTS:**  
Silver Alloy

**TERMINALS:**  
Silver Plated Copper

**SUGGESTED PANEL CUTOUT**



PANEL THICKNESS	X
0.030~0.049 [0.75~1.25]	0.756 [19.2]
0.049~0.079 [1.25~2.00]	0.764 [19.4]
0.079~0.118 [2.00~3.00]	0.772 [19.6]

**DIMENSIONS**

**INCHES [MILLIMETERS]**

**GENERAL TOLERANCES**  
±0.008 [±0.2] / ±1'

**SCALE**  
DRAWING NOT TO SCALE

RA45131100

ACTUATOR	REV.	DATE	BY
A	09/09/17	CAB	
BODY	A	09/09/17	CAB
CONTACTS	A	09/09/17	CAB
MATERIALS	A	09/09/17	CAB
SPECIFICATIONS	A	09/09/17	CAB
REFERENCE	REV.	DATE	BY

THE INFORMATION CONTAINED IN THIS DOCUMENT IS PROPRIETARY TO E-SWITCH-LAMB INDUSTRIES AND IS NOT TO BE COPIED OR TRANSMITTED

INITIAL RELEASE DESCRIPTION	REV.	DATE	DRAWN BY
20079	A	1/21/13	CBP

20079 FOR DATE

DRAWING NUMBER	DATE	REVISION
39-RA45131100	1/21/13	A